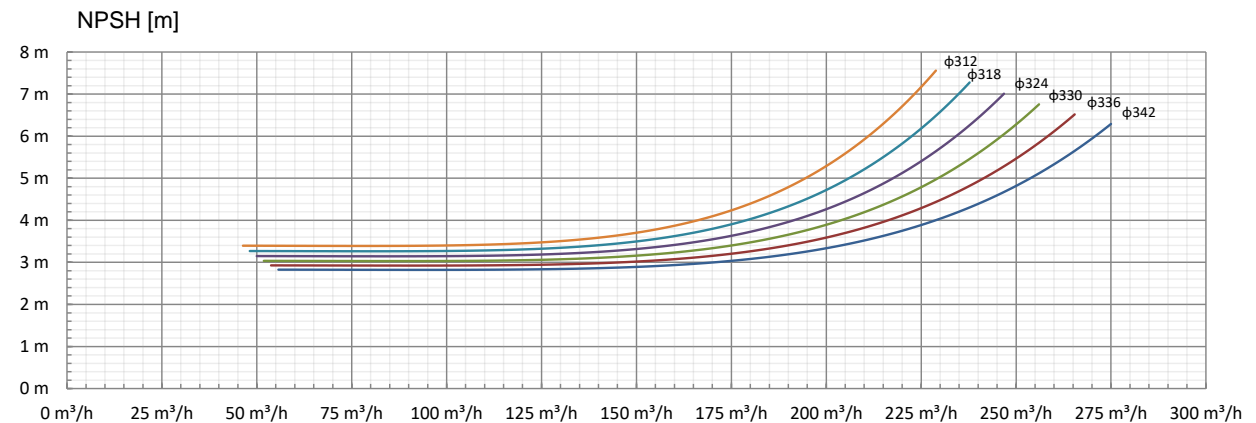
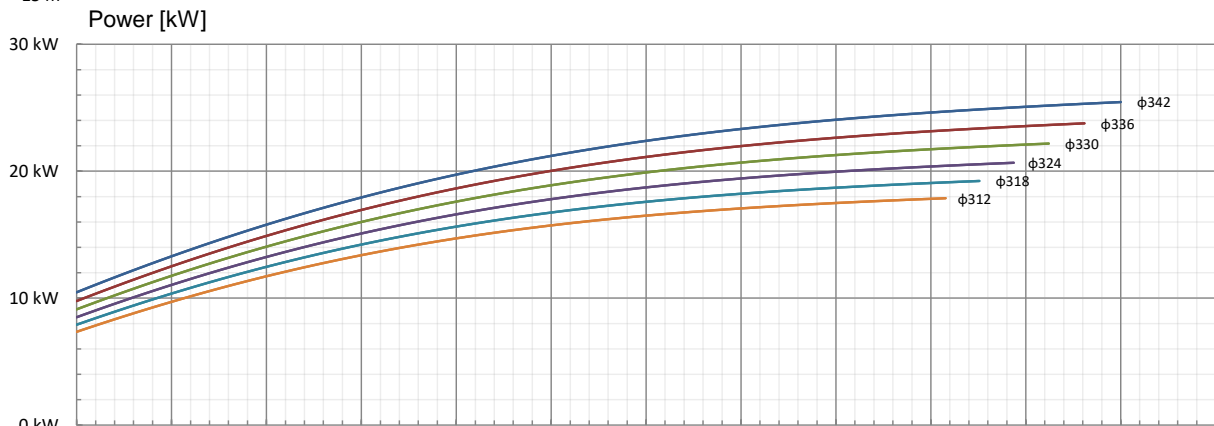
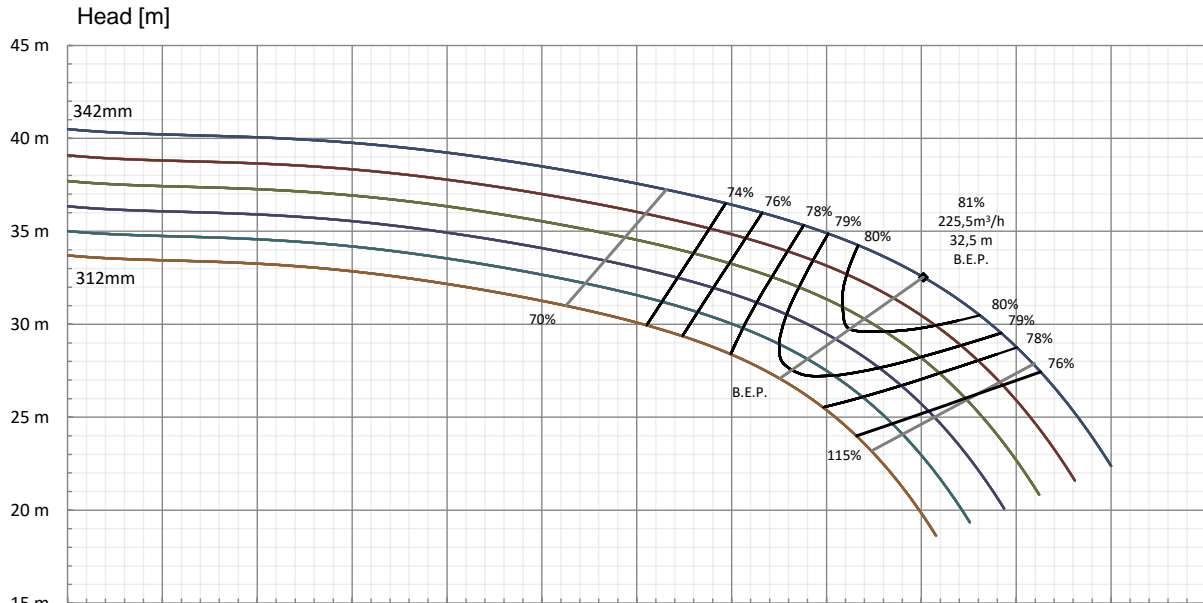


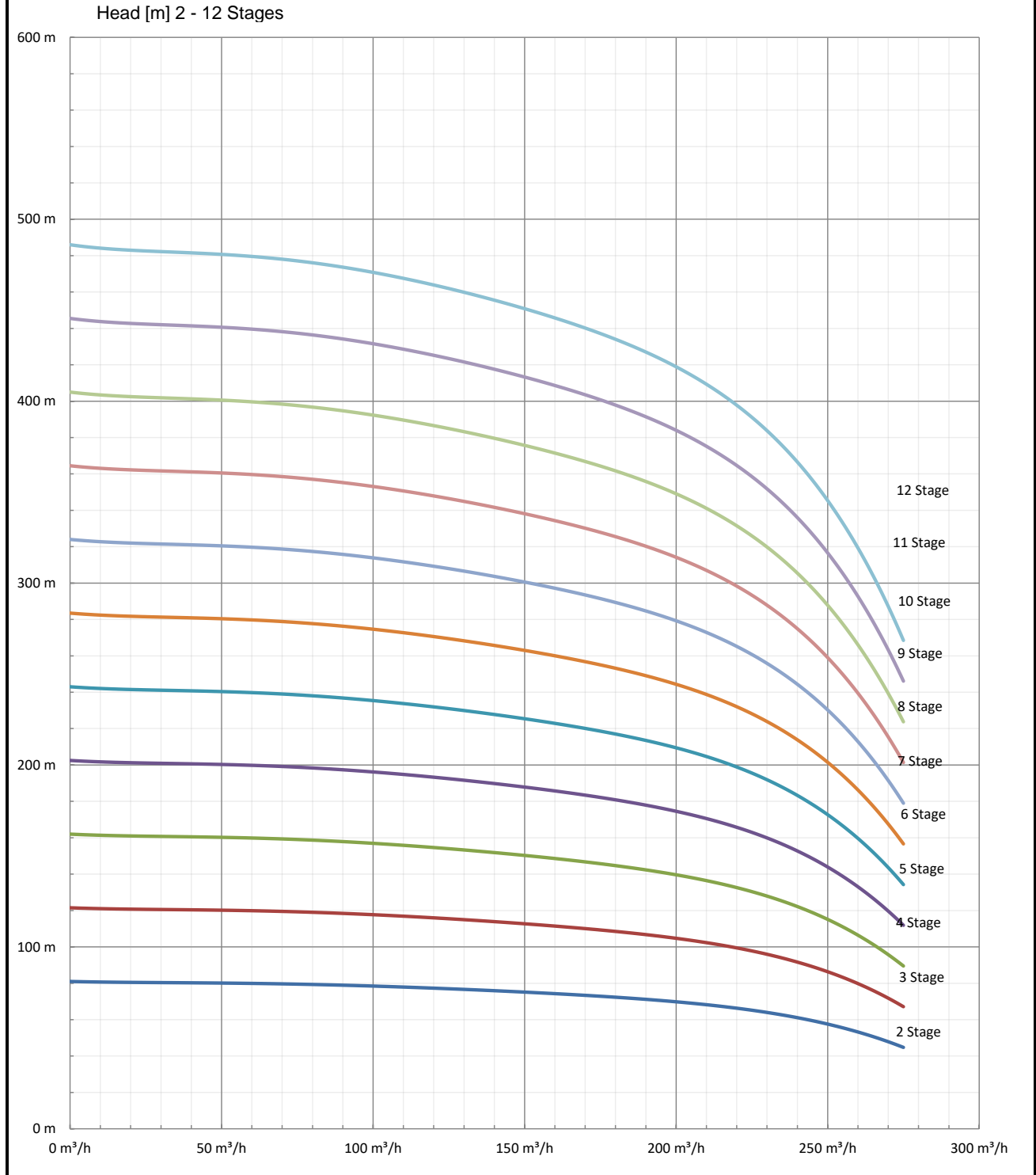
Specific Speed	27,4 Met / 1411 Imp	Flange Detail		Part / DWG #	
Pump Speed	1490 rpm Clockwise	Suction	DN 200 - PN 64	1st Impeller	GHP32-17
Max No. Stages	12 Stages	Delivery	DN 150 - PN 160	Impeller	GHP32-23
Max Head	486,0 m	Pumped Medium - Water @		Diffuser	GHP32-21
Max Flowrate	275,0 m ³ /h	Temperature	20 °C	Last Diffuser	GHP32-21
Max Efficiency	81,0%	Viscosity	1 cP	Overflow	GHP32-22
Max Abs Power	25,4 kW Per Stage	Density	998 kg/m ³	Stage Casing	GHP32-42



The operating range shown above follows best practice and ensures that the lifespan of the pump is maximised, in instances where this cannot be followed please contact a Scamont Technician to discuss your particular requirements.

DOCUMENT NUMBER:	SCAG-R-218	ENGINEER:	Craig Adamson
REVISION:	2	PROJECT:	
DATE:	2021/07/14	CUSTOMER:	

Specific Speed	27,4 Met / 1411 Imp	Flange Detail		Part / DWG #	
Pump Speed	1490 rpm Clockwise	Suction	DN 200 - PN 64	1st Impeller	GHP32-17
Max No. Stages	12 Stages	Delivery	DN 150 - PN 160	Impeller	GHP32-23
Max Head	486,0 m	Pumped Medium - Water @		Diffuser	GHP32-21
Max Flowrate	275,0 m ³ /h	Temperature	20 °C	Last Diffuser	GHP32-21
Max Efficiency	81,0%	Viscosity	1 cP	Overflow	GHP32-22
Max Abs Power	25,4 kW Per Stage	Density	998 kg/m ³	Stage Casing	GHP32-42



DOCUMENT NUMBER:	SCAG-R-218	ENGINEER:	Craig Adamson
REVISION:	2	PROJECT:	
DATE:	2021/07/14	CUSTOMER:	